

BlueHealth

Linking environment, climate & health



BlueHealth policy scenario's and the Sustainable Development Goals 2030

PechaKucha

20 X 20
slides seconds

Lieke Friederichs, Netherlands National
Institute for Public Health and the
Environment

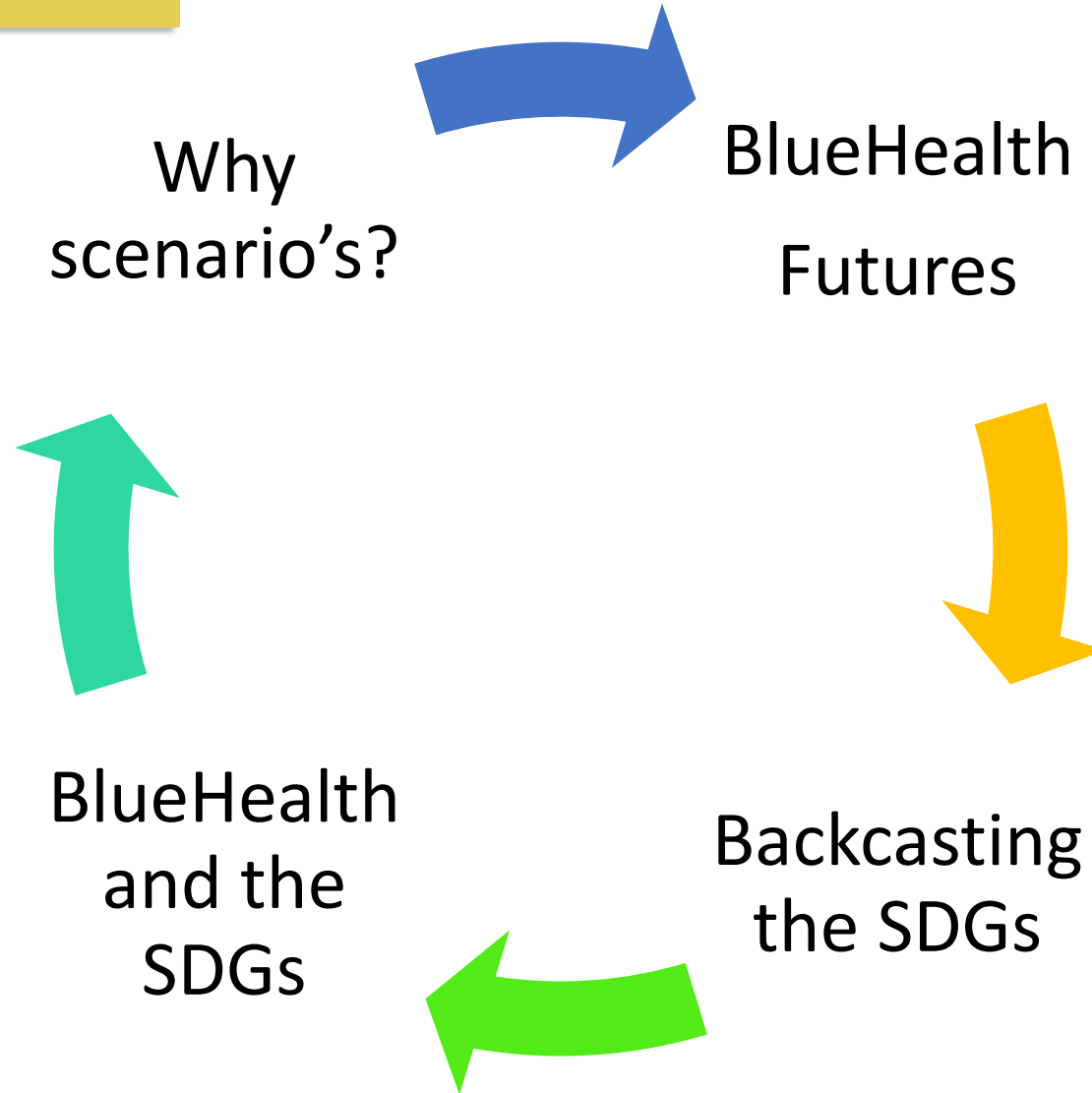
BlueHealth is funded by the European Union's Horizon 2020 research
and innovation programme, grant agreement No 666773



Scenario building



In this presentation



Scenario building



Why?

- Future is uncertain.. but can be explored!
- To **identify emerging challenges** and to **foster adaptability** to change
- To **review and assess current strategies and policies**
- To **promote discussion** about future trends to **support decision making**



Scenario building



Scenario's 101

What?

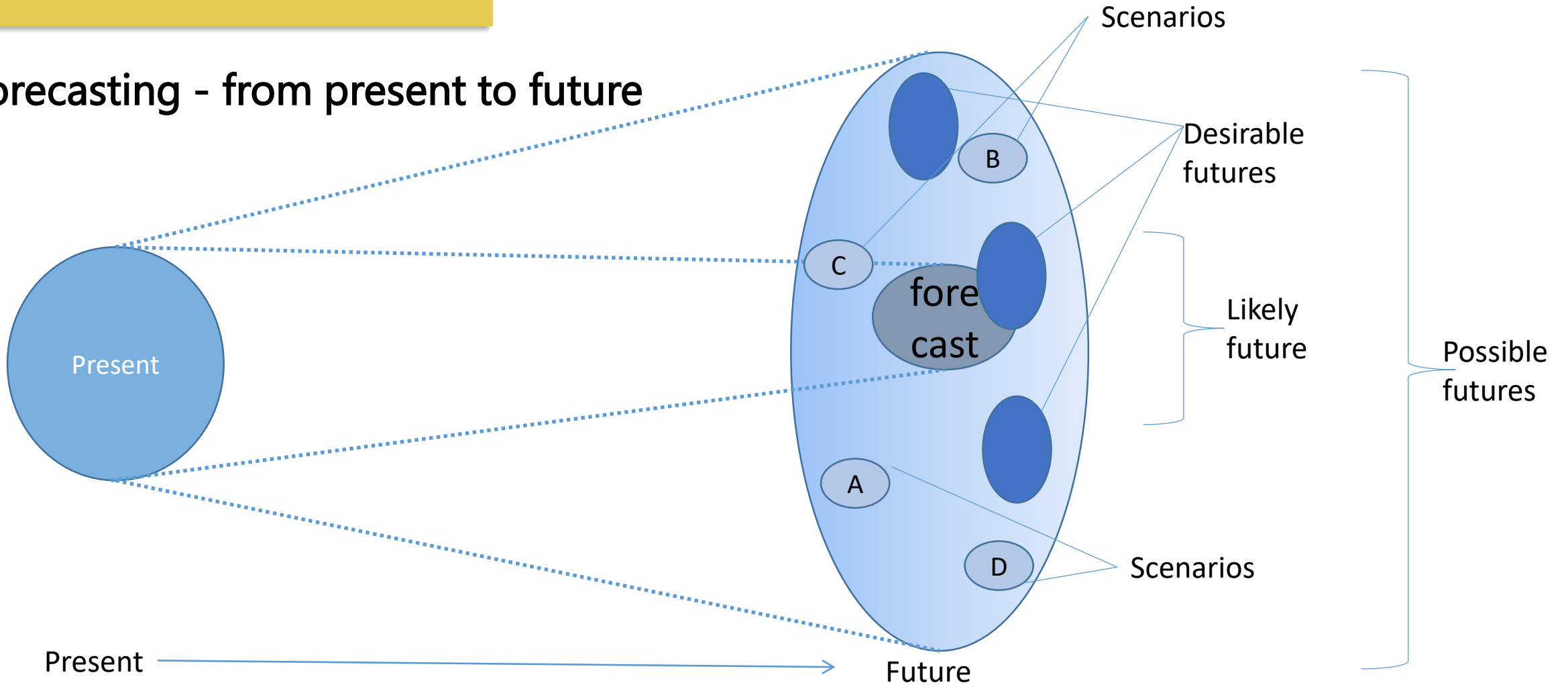
- A scenario is a **coherent, internally consistent, systematic and plausible description** of a **possible future state** of the world -
> **not a prediction!**
- Forecast/Prediction is the most likely projection and is based on the most likely set of assumptions.
- A forecast or prediction usually covers only a short- or medium-term period...

Scenario building



What?

Forecasting - from present to future



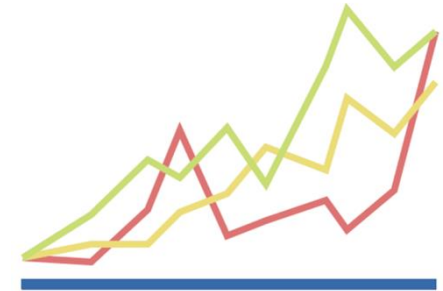
Scenario building



BlueHealth scenario's

What?

- **6 urban level scenario's**; Thessaloniki, Barcelona, Plymouth, Amsterdam, Tallinn, Malmo
- Looking forward to **2040**
- Combination of trend extrapolation (**trends**) and desired future (**values**)
- Identification **policy interventions that lead to the desired future**



Scenario building

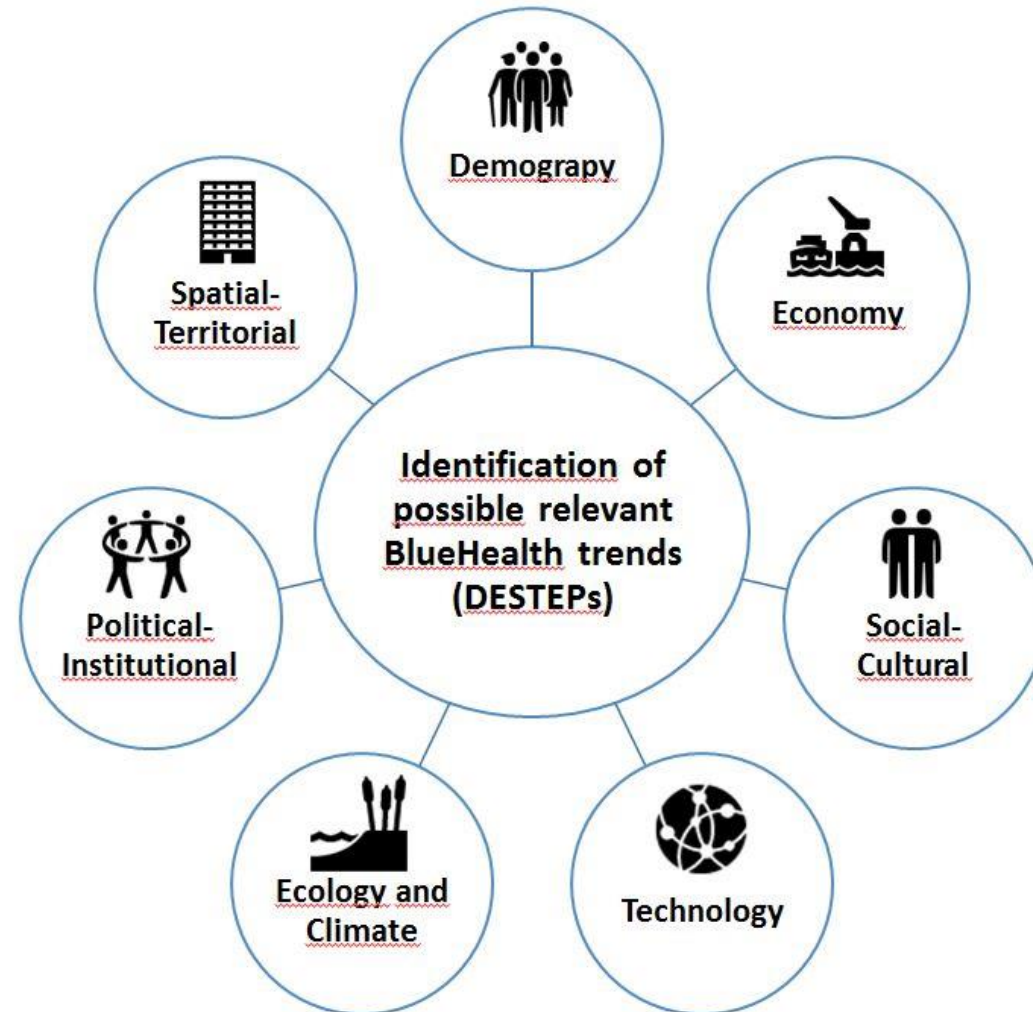


Trends

DESTEPs

- *Demography*
- *Economy*
- *Social-cultural*
- *Technological*
- *Ecology and Climate*
- *Political-Institutional*

EU to sub-regional level data



Scenario building



Local expert workshops

- Value identification
- Scoring of priorities and uncertainties of trends on the urban level
- Interdisciplinary discussion about impacts



Scenario building



Sustainable use of natural capital



Promoting a healthy long life



Economic value of BlueHealth activities



Stimulating health equalities: BlueHealth for all



4 key values

Scenario building



Different kinds

- Looking forward....
- Looking back from the future

SUSTAINABLE DEVELOPMENT GOALS



Scenario building



Desirable pathways

- Desirable futures vs desirable pathways

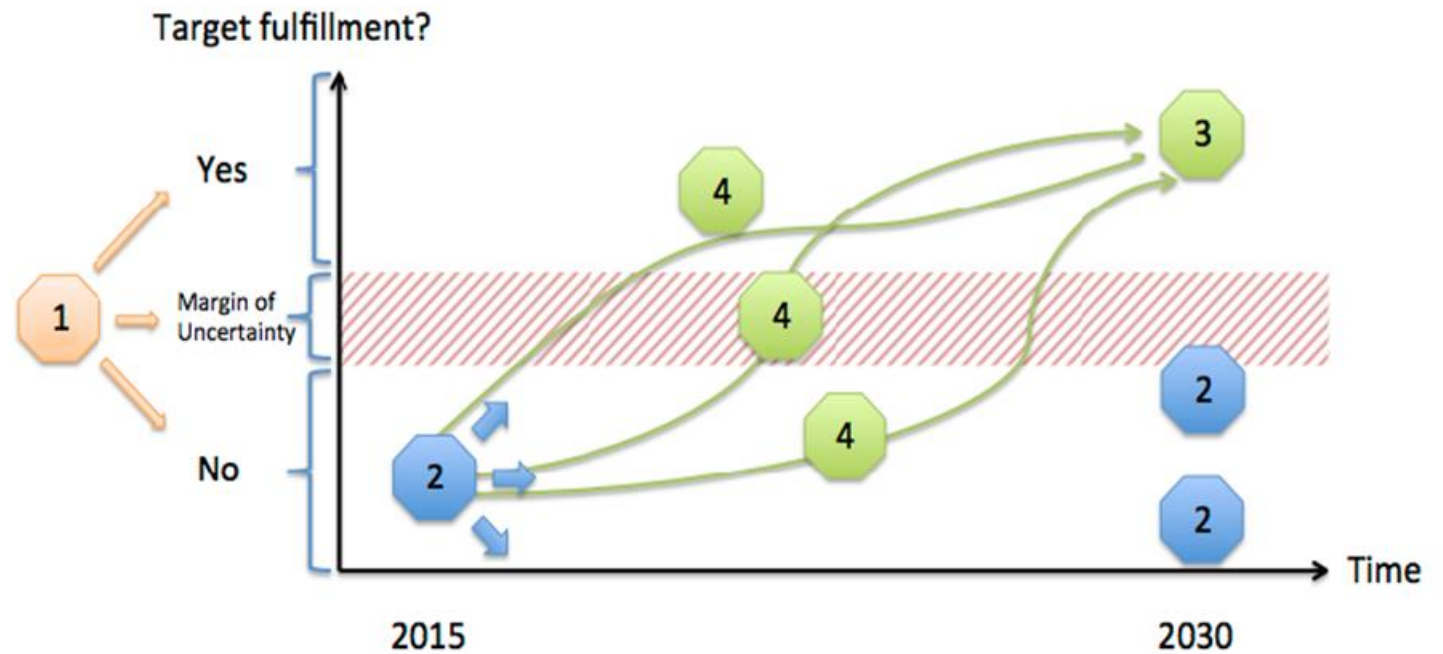


Scenario building



Backcasting 101

- 1 Formulate target
- 2 Analyse current trend
- 3 Develop scenarios for desired future
- 4 Analyse desirability of pathways

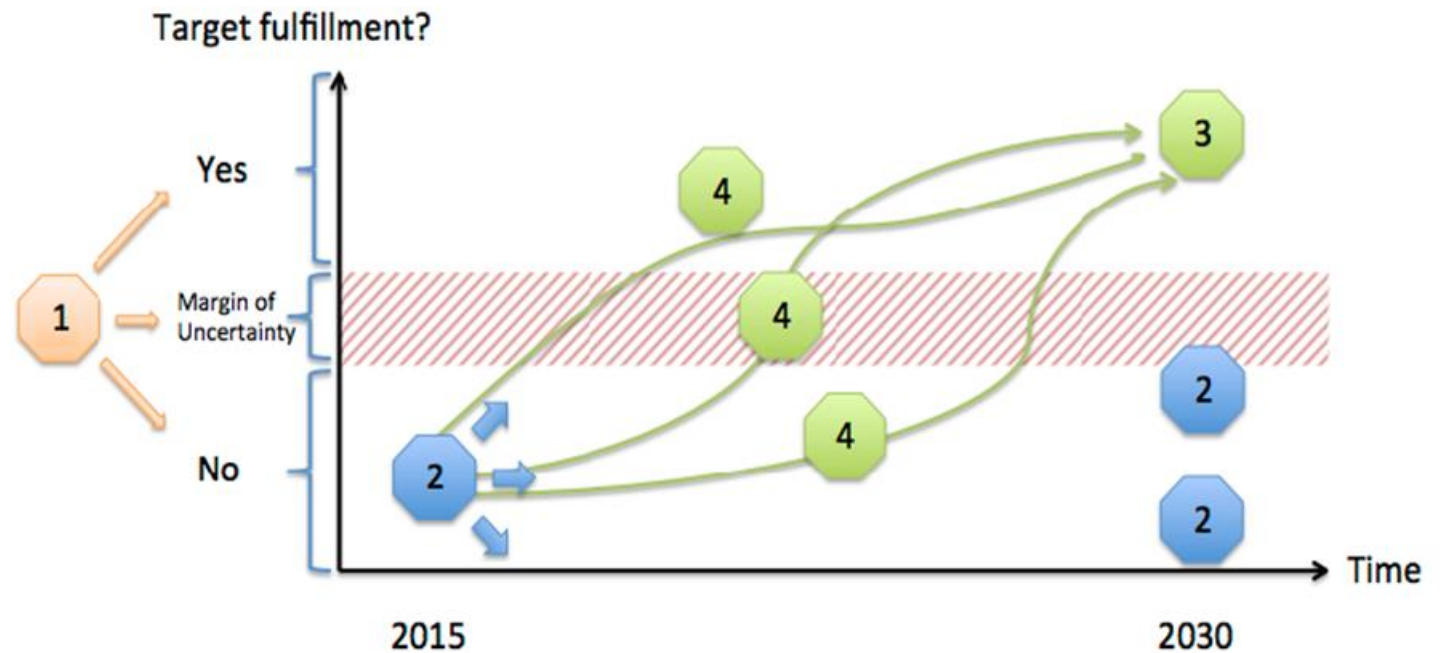


Scenario building



Backcasting 101

- 1 Formulate target
- 2 Analyse current trend
- 3 Develop scenarios for desired future
- 4 Analyse desirability of pathways



Scenario building

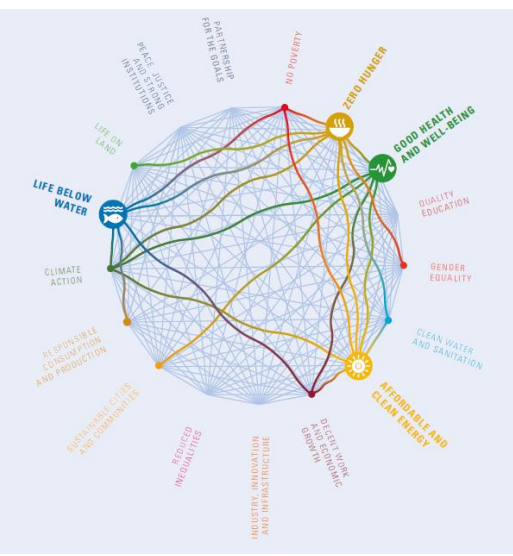


Interactions

Explore interactions

-Synergies

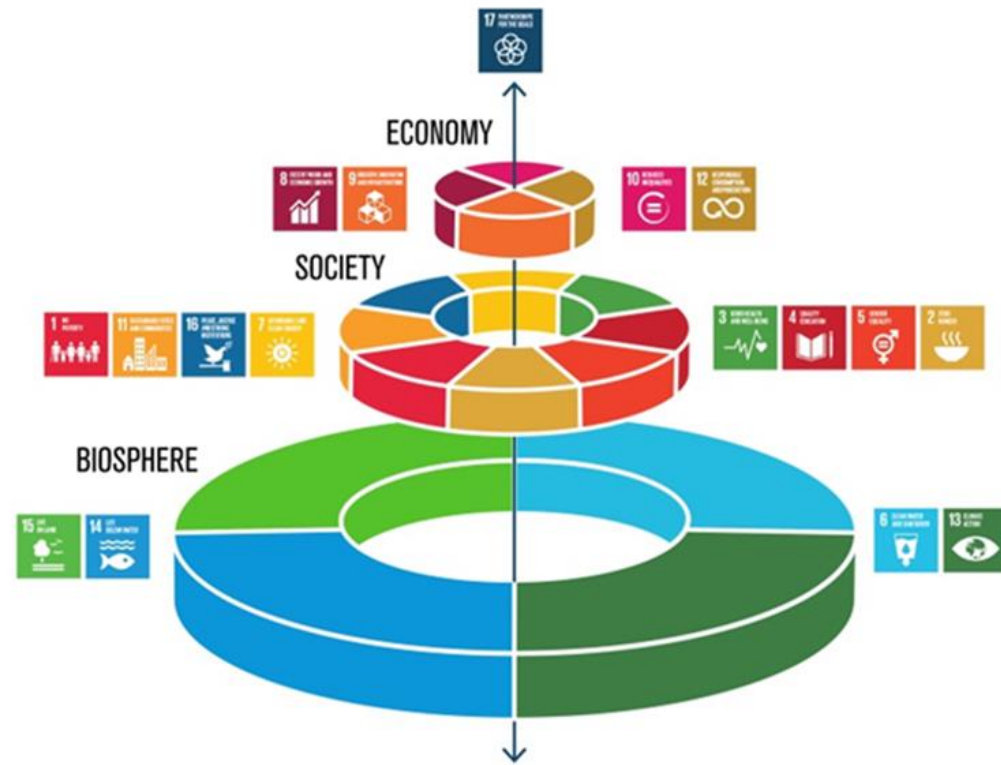
-Considerations (aka trade-offs)



Scenario building

Interactions

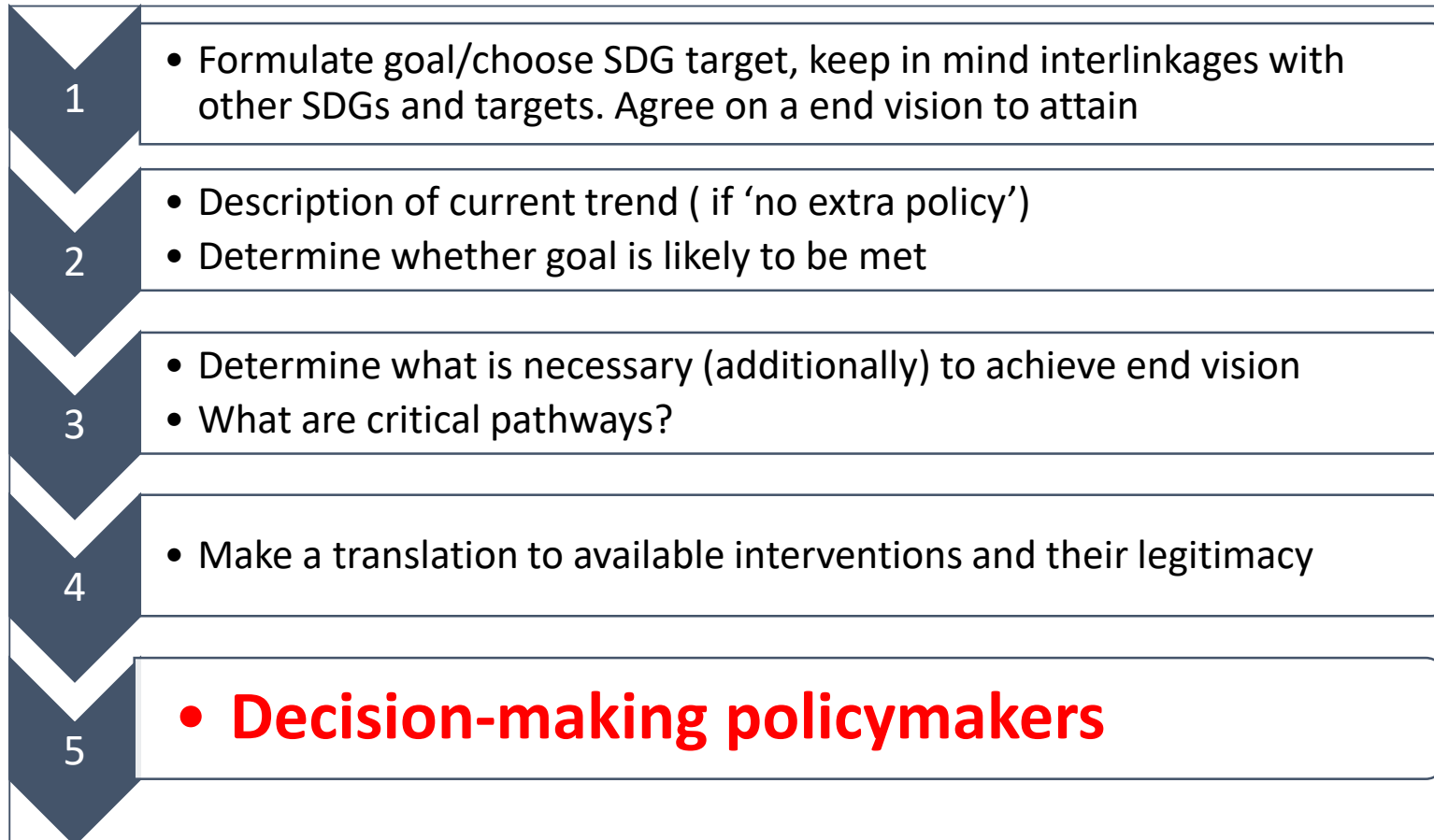
- Interaction models



Scenario building



Backcasting the SDGs



-Integrated assessment modelling

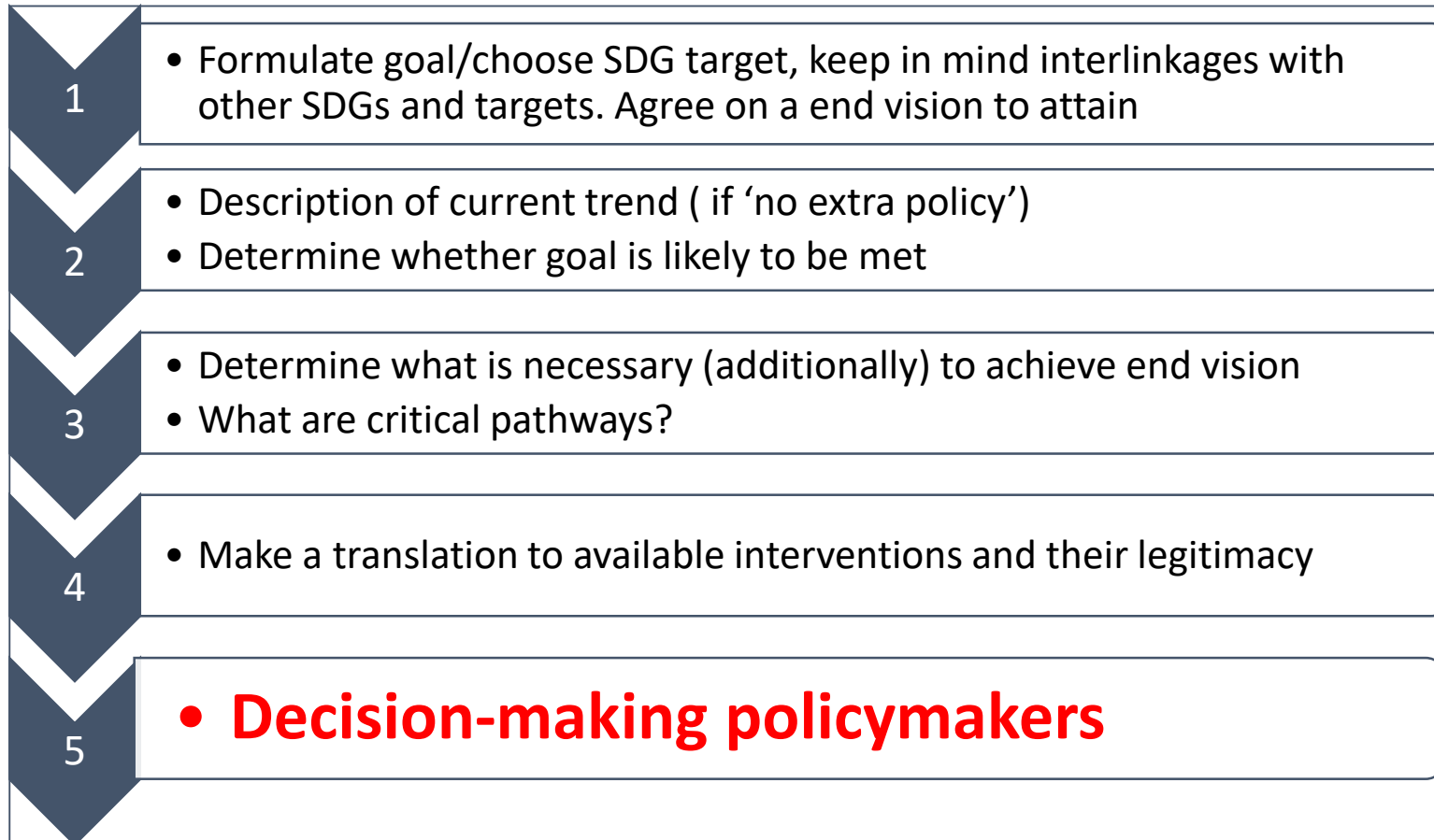
-Forecasting

Stakeholder engagement!

Scenario building



Backcasting the SDGs



-Integrated assessment modelling

-Forecasting



Scenario building



Sustainable use of natural capital



Economic value of BlueHealth activities



Promoting a healthy long life



4 key values

Stimulating health equalities: BlueHealth for all



Scenario building



Conclusions

- Scenario building is a way to show how different values may co-exist in a desirable future
- Scientists give insights into important synergies and considerations (aka trade-offs)
- Back-casting and stakeholder engagement to formulate legitimate developmental pathways
- SDGs as a framework for BlueHealth values and futures



BlueHealth

Linking environment, climate & health



Would you like to continue talking SDGs?

Lieke.Friederichs@rivm.nl

Find out more at www.bluehealth2020.eu

BlueHealth is funded by the European Union's Horizon 2020 research and innovation programme, grant agreement No 666773

